

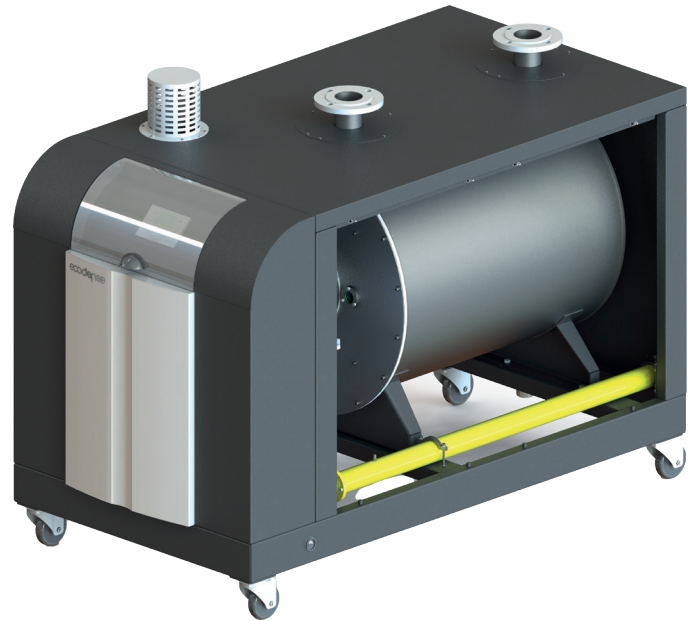
# FT-SS SERIES

## WALL TYPE CONDENSING BOILER



### SPECIFICATIONS

- High efficiency with Premix condensation technology and micro-flame metal fiber coated steel burner,
- High performance and long-lasting durability with expanded surface area and sheet thickness in the stainless steel heat exchanger,
- Heat exchanger protection with magnetic residue protection integrated in the boiler,
- Low back pressure thanks to the collector structure,
- 9 different large capacity options as 250, 350, 450, 550, 650, 750, 850, 950, 1050 in single boiler,
- Wide thermal capacity option up to 16,800 kW, thanks to the cascade connection of 16 boilers in cascade systems,
- Energy saving through 5:1 modulating operation,
- Illuminated LCD panel for ease of use,
- Daily and weekly operation schedule can be programmed,
- Preparing summer and winter seasonal heat program,
- Option of use with Natural gas and LPG,
- Operation at lower noise values,
- Frost protection feature,
- Eco-friendly heating systems with low NOx and CO emission rates,



### AREAS OF USE



House/Residence



Hotels



Hospitals



Schools



Plazas  
Shopping Malls



Gyms



Swimming  
Pools



# ECODENSE **FT-SS** SERIES

## FLOOR TYPE CONDENSING BOILER

ТЕХНИЧЕСКИЕ ХАРАКТЕРИСТИКИ	Unit	FT-SS 250	FT-SS 350	FT-SS 450	FT-SS 550	FT-SS 650	FT-SS 750	FT-SS 850	FT-SS 950	FT-SS 1050
<b>Thermal Capacity</b>										
Maximum Heating Capacity	kW	250	350	450	550	650	750	850	950	1050
Minimum Heating Capacity	kW	56,3	75	89	114	110	125	135	146	150
Maximum Heat Output (80°C / 60°C)	kW	243,1	341	440,6	534,7	632,8	730	827,5	924,8	1023
Minimum Heat Output (80°C / 60°C)	kW	55	73,4	86,6	111,5	107,7	122	132	142,5	146,5
Maximum Heat Output (70°C / 50°C)	kW	253,2	355	458	557	659	760	861	963	1065
Minimum Heat Output (70°C / 50°C)	kW	57,7	77	91	117	113	128	139	150	154
Maximum Heat Output (50°C / 30°C)	kW	263,2	369,2	475	578,8	685,7	790,1	895	1000,8	1106,5
Minimum Heat Output (50°C / 30°C)	kW	60,4	80,6	95,6	122,5	118,5	134,7	145,2	157	161,4
<b>Thermal Efficiency</b>										
Efficiency @ Pmax. (80°C / 60°C)	%	97,2	97,3	97,9	97,2	97,4	97,3	97,4	97,3	97,4
Efficiency @ Pmin. (80°C / 60°C)	%	97,7	97,8	97,3	97,8	97,9	97,6	97,8	97,6	97,7
Efficiency @ Pmax. (70°C / 50°C)	%	101,3	101,4	101,7	101,2	101,4	101,3	101,3	101,3	101,4
Efficiency @ Pmin. (70°C / 50°C)	%	102,5	102,6	102,4	102,6	102,8	102,7	102,7	102,6	102,6
Efficiency @ Pmax. (50°C / 30°C)	%	105,3	105,5	105,6	105,2	105,5	105,3	105,3	105,3	105,4
Efficiency @ Pmin. (50°C / 30°C)	%	107,3	107,5	107,4	107,5	107,7	107,8	107,6	107,5	107,6
Efficiency @ %30 (30°C)	%	108,2	108,1	108,3	108,3	108,4	108,2	108,2	108,3	108,1
<b>Domestic Hot Water Circuit</b>										
Temperature adjustment range with external storage tank usage	°C	10-65	10-65	10-65	10-65	10-65	10-65	10-65	10-65	10-65
<b>Central Heating Circuit</b>										
Maximum Operating Temperature	°C	90	90	90	90	90	90	90	90	90
Maximum Operating Pressure	bar	6	6	6	6	6	6	6	6	6
Minimum Operating Pressure	bar	1	1	1	1	1	1	1	1	1
<b>Gas Specifications</b>										
Gas Type	-	G20-G31	G20-G31	G20-G31	G20-G31	G20-G31	G20-G31	G20-G31	G20-G31	G20-G31
Gas Inlet Pressure (G20)	mbar	20	20	20	20	20	20	20	20	20
Gas Inlet Pressure (G31)	mbar	37	37	37	37	37	37	37	37	37
Maximum gas consumption	Nm <sup>3</sup> /h	26,6	36,48	46,91	57,33	67,76	78,18	88,61	99,03	109,45
Minimum gas consumption	Nm <sup>3</sup> /h	5,87	7,82	9,28	11,88	11,47	13,03	14,07	15,22	15,64
<b>Combustion Specifications</b>										
Maximum Flue Gas Temperature (50°C / 30°C)	°C	52,4	52,6	54,7	55,2	55,3	55,7	56,2	57,5	57,1
Maximum Flue Gas Temperature (70°C / 50°C)	°C	62,1	62,4	64,5	64,6	64,9	65,4	65,9	67,5	68,8
Maximum Flue Gas Temperature (80°C / 60°C)	°C	69,4	72,1	74,6	74,2	74,5	75,1	75,6	78,2	79,5
NOx Emission Class (EN 15502-1+A1)	-	6	6	6	6	6	6	6	6	6
<b>Electrical Specifications</b>										
Electrical Supply	V / Hz	230/50	230/50	230/50	230/50	230/50	230/50	230/50	230/50	230/50
Protection Class	IP	X4D	X4D	X4D	X4D	X4D	X4D	X4D	X4D	X4D
Energy Consumption	W	260	280	350	400	520	600	670	750	840
Fuse Current	A	6	6	6	6	6	6	6	6	6
<b>Circuit Specifications</b>										
Gas Connection Diameter	inch	1 1/2"	1 1/2"	2"	2"	2"	2"	2"	2"	2"
Central Heating Circuit Inlet/Outlet Diameter	inch	2"	2"	2 1/2"	2 1/2"	2 1/2"	2 1/2"	2 1/2"	2 1/2"	2 1/2"
<b>General Specifications</b>										
Net Weight	kg	200	222	225	291	351	455	525	612	667
Flue Diameter (Ø)	mm	160	160	200	200	200	200	200	200	200
G 20 Natural Gas, G 31 LPG										