

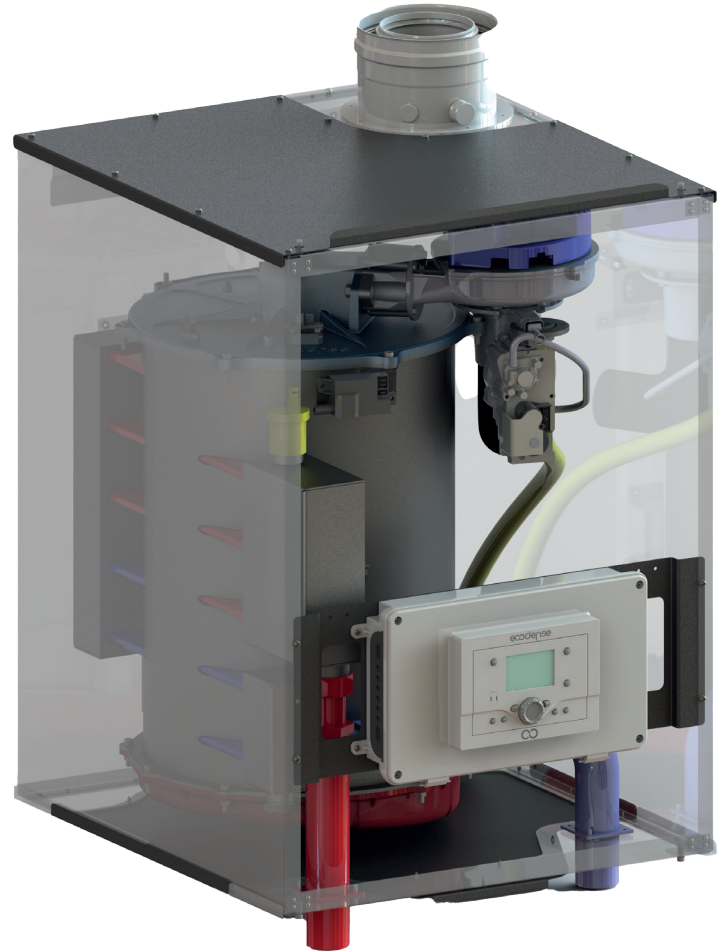
# WT-SS SERIES

## WALL TYPE CONDENSING BOILER

new

### SPECIFICATIONS

- High efficiency with Premix condensation technology and micro-flame metal fiber coated steel burner,
- High performance and long-lasting durability with expanded surface area and sheet thickness in the stainless steel heat exchanger,
- Heat exchanger protection with magnetic residue protection integrated in the boiler,
- Enhanced combustion efficiency with flash back flap,
- Low energy consumption with the modulating primary circuit pump integrated to the boiler with capacities 45-55-65 kW,
- 10 different large capacity options as 45, 55, 65, 80, 90, 100, 110, 115, 125, 150 in single boiler,
- Wide thermal capacity option up to 2,400 kW, thanks to the cascade connection of 16 boilers in cascade systems,
- Maximum air and water tightness with hermetic case,
- Energy saving through 5:1 modulating operation,
- Illuminated LCD panel for ease of use,
- Daily and weekly operation schedule can be programmed,
- Preparing summer and winter seasonal heat program,
- Option of use with Natural gas and LPG,
- Operation at lower noise values,
- Frost protection feature,
- Eco-friendly heating systems with low NOx and CO emission rates,



### AREAS OF USE



House/Residence



Hotels



Hospitals



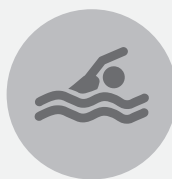
Schools



Plazas  
Shopping Malls



Gyms



Swimming  
Pools



# ECODENSE WT-SS SERIES WALL TYPE CONDENSING BOILER

TECHNICAL SPECIFICATIONS	Unit	WT-SS 45	WT-SS 50	WT-SS 55	WT-SS 60	WT-SS 65	WT-SS 80	WT-SS 90	WT-SS 100	WT-SS 110	WT-SS 115	WT-SS 125	WT-SS 150
<b>Thermal Capacity</b>													
Maximum Heating Capacity	kW	45	50	55	60	65	80	90	100	110	115	125	143
Minimum Heating Capacity	kW	9,7	10,8	11,8	12,9	14	14,15	14,18	14,27	19,9	19,9	20	20
Maximum Heat Output (80°C / 60°C)	kW	43,7	48,6	53,3	58,2	63,2	77,8	87,5	97,2	106,9	111,7	121,4	138,8
Minimum Heat Output (80°C / 60°C)	kW	9,5	10,5	11,5	12,6	13,7	13,8	13,8	13,9	19,4	19,4	19,5	19,5
Maximum Heat Output (70°C / 50°C)	kW	45,6	50,7	55,5	60,7	65,9	81,1	91,3	101,4	111,5	116,4	126,5	144,6
Minimum Heat Output (70°C / 50°C)	kW	10	11,1	12,1	13,3	14,4	14,5	14,6	14,7	20,4	20,4	20,5	20,5
Maximum Heat Output (50°C / 30°C)	kW	47,6	52,8	57,8	63,2	68,6	84,4	95	105,5	116,1	121	131,5	150,4
Minimum Heat Output (50°C / 30°C)	kW	10,4	11,6	12,7	13,9	15,1	15,2	15,3	15,4	21,3	21,3	21,5	21,5
<b>Thermal Efficiency</b>													
Efficiency @ Pmax. (80°C / 60°C)	%	97,1	97,2	96,9	97,1	97,2	97,3	97,2	97,2	97,2	97,1	97,1	97
Efficiency @ Pmin. (80°C / 60°C)	%	97,6	97,6	97,9	97,9	97,9	97,5	97,3	97,4	97,5	97,5	97,5	97,5
Efficiency @ Pmax. (70°C / 50°C)	%	101,4	101,4	101	101,2	101,4	101,4	101,4	101,4	101,4	101,2	101,2	101,1
Efficiency @ Pmin. (70°C / 50°C)	%	102,6	102,6	102,9	102,9	102,9	102,5	102,6	102,7	102,3	102,3	102,5	102,5
Efficiency @ Pmax. (50°C / 30°C)	%	102,6	102,6	102,9	102,9	102,9	102,5	102,6	102,7	102,3	102,3	102,5	102,5
Efficiency @ Pmin. (50°C / 30°C)	%	105,8	105,5	105,1	105,4	105,5	105,5	105,6	105,5	105,5	105,2	105,2	105,2
Efficiency @ %30 (30°C)	%	107,2	107,2	107,9	107,9	107,9	107,4	107,9	107,9	107	107	107,5	107,5
<b>Domestic Hot Water Circuit</b>													
Temperature adjustment range with external storage tank usage	°C	10-65	10-65	10-65	10-65	10-65	10-65	10-65	10-65	10-65	10-65	10-65	10-65
<b>Central Heating Circuit</b>													
Maximum Operating Temperature	°C	90	90	90	90	90	90	90	90	90	90	90	90
Water Volume	L	9	9	9	9	9	9	9	9	9	9	9	9
Maximum Operating Pressure	bar	6	6	6	6	6	6	6	6	6	6	6	6
Minimum Operating Pressure	bar	1	1	1	1	1	1	1	1	1	1	1	1
<b>Gas Specifications</b>													
Gas Type	-	G20-G31	G20-G31	G20-G31	G20-G31	G20-G31	G20-G31	G20-G31	G20-G31	G20-G31	G20-G31	G20-G31	G20-G31
Gas Inlet Pressure (G20)	mbar	20	20	20	20	20	20	20	20	20	20	20	20
Gas Inlet Pressure (G31)	mbar	37	37	37	37	37	37	37	37	37	37	37	37
Maximum gas consumption	Nm <sup>3</sup> /h	4,69	5,21	5,73	6,25	6,78	8,34	9,38	10,42	11,47	12	13,3	14,91
Minimum gas consumption	Nm <sup>3</sup> /h	1,1	1,13	1,23	1,34	1,46	1,48	1,48	1,49	2,7	2,7	2,8	2,8
<b>Combustion Specifications</b>													
Maximum Flue Gas Temperature (50°C / 30°C)	°C	52,4	52,6	54,7	55,2	55,3	55,7	56,2	57,5	57,1	56,2	57,2	57,5
Maximum Flue Gas Temperature (70°C / 50°C)	°C	62,1	62,4	64,7	64,7	64,9	65,4	65,9	67,9	68,8	68,7	68,9	69,8
Maximum Flue Gas Temperature (80°C / 60°C)	°C	69,4	72,1	74,6	74,2	74,5	75,1	75,6	78,2	80,5	81,2	80,6	82
NOx Emission Class (EN 15502-1+A1)	-	6	6	6	6	6	6	6	6	6	6	6	6
<b>Electrical Specifications</b>													
Electrical Supply	V / Hz	230/50	230/50	230/50	230/50	230/50	230/50	230/50	230/50	230/50	230/50	230/50	30/50
Protection Class	IP	X4D	X4D	X4D	X4D	X4D	X4D	X4D	X4D	X4D	X4D	X4D	X4D
Energy Consumption	W	62	65	70	80	90	110	120	130	140	170	220	260
Fuse Current	A	6	6	6	6	6	6	6	6	6	6	6	6
<b>Circuit Specifications</b>													
Gas Connection Diameter	inch	3/4"	3/4"	3/4"	3/4"	3/4"	3/4"	3/4"	3/4"	3/4"	3/4"	3/4"	3/4"
Central Heating Circuit Inlet/Outlet Diameter	inch	3/4"	3/4"	1"	1"	1"	1 1/2"	1 1/2"	1 1/2"	1 1/2"	1 1/2"	1 1/2"	1 1/2"
<b>General Specifications</b>													
Net Weight	kg	60	60	65	65	65	75	75	75	80	80	80	80
Flue Diameter (D)	mm	60/100	60/100	80/125	80/125	80/125	100/150	100/150	100/150	100/150	100/150	100/150	100/150
G 20 Natural Gas, G 31 LPG													